

17 Nov	(Thurs)	<b>7.30pm</b> Bell Ringing Practice at St Mary's. <b>7.45pm</b> Benefice Choir Practice, St Peter's
18 Nov	(Fri)	<b>10.00am</b> Goodworth Clatford WI Walking Group <b>10.00am</b> Opening of the Ice Rink and Christmas Markets at Winchester Cathedral.
19 Nov	(Sat)	Pre-Christmas Fayre Abbots Ann Village Shop - Page 10
20 Nov	(Sun)	<u>(The Sunday Next Before Advent)</u> full service details – page 2 <b>8.00pm</b> Eagle Pub Quiz, Abbots Ann
21 Nov	(Mon)	<b>7.30pm</b> Films at Upper Clatford "Sing Street" -page 7
22 Nov	(Tues)	<b>11.15am</b> Said service of Morning Prayer, St Francis Chapel in St Peter's Church
23 Nov	(Wed)	<b>7.00pm</b> The Wednesday Bridge Club at GCVC <b>7.45pm</b> Clatford Valley Garden Club meets in UC Memorial Hall.
24 Nov	(Thurs)	<b>7.30pm</b> Abbots Ann WI meets in Abbots Ann War Memorial Hall. <b>7.30pm</b> Bell Ringing Practice at St Mary's. <b>7.45pm</b> Benefice Choir Practice St Peter's
26 Nov	(Sat)	<b>1.00pm</b> Abbots Ann Primary School Christmas Bazaar - page 21 <b>7.30pm</b> "Peter Pan – The Musical" at Upper Clatford Memorial Hall
27 Nov	(Sun)	<u>(The First Sunday of Advent)</u> full service details – page 2 <b>2.00pm</b> "Peter Pan – The Musical" at Upper Clatford Memorial Hall. <b>8.00pm</b> Eagle Pub Quiz, Abbots Ann
29 Nov	(Tues)	<b>11.15am</b> Said service of Morning Prayer, St Francis Chapel in St Peter's Church <b>7.30pm</b> "Absolutely Fabulous" film at Goodworth Clatford Village Club.
30 Nov	(Wed)	<b>7.00pm</b> The Wednesday Bridge Club at GCVC
<b>DECEMBER 2016</b>		
1 Dec	(Thurs)	<b>10.30am</b> Goodworth Clatford WI Coffee Morning <b>7.00pm</b> Abbots Ann Parish Council meets in AA War Memorial Hall <b>7.00pm</b> Hand Bell Ringing at 9 Catherine's Walk. <b>7.45pm</b> Benefice Choir Practice, St Peter's
2 Dec	(Fri)	<b>7.30pm</b> "Snow White" in Abbots Ann War Memorial Hall – page 26 <b>7.30pm</b> "Peter Pan – The Musical" at Upper Clatford Memorial Hall.
3 Dec	(Sat)	<b>2.00pm</b> and <b>7.30pm</b> "Snow White" in Abbots Ann War Memorial Hall. Goodworth Clatford Village Club Quiz Night and Supper <b>7.30pm</b> "Peter Pan – The Musical" at Upper Clatford Memorial Hall.
4 Dec	(Sun)	<u>(The Second Sunday of Advent)</u> Full service details – page 2 <b>2.00pm</b> "Peter Pan – The Musical" at Upper Clatford Memorial Hall. <b>4.00pm</b> "Snow White" in Abbots Ann War Memorial Hall <b>8.00pm</b> Eagle Pub Quiz, Abbots Ann
5 Dec	(Mon)	<b>12.30pm</b> Way Inn Christmas Lunch at St. Peter's
6 Dec	(Tues)	<b>11.15am</b> Said service of Morning Prayer, St Francis Chapel in St Peter's Church
7 Dec	(Wed)	<b>7.00pm</b> The Wednesday Bridge Club (Partnership Meeting) in GCVC
<b>8 Dec</b>	<b>(Thurs)</b>	<b>12.00noon deadline for receipt of copy for the January 2017</b> <b><u>Abbots Ann Magazine – EARLIER THIS MONTH</u></b> <b><u>editor@abbotsannmagazine.co.uk</u></b>

## **St Mary's Church, Abbots Ann**

<b><u>Priest-in-charge</u></b>	Revd. Katrina Dykes <a href="mailto:revdkatrina@gmail.com">revdkatrina@gmail.com</a> (Her day off is Friday)	07922 153765
<b><u>Ministry Team</u></b>	Revd. Nicky Judd <a href="mailto:clive@judd47.plus.com">clive@judd47.plus.com</a> Tim Tayler <a href="mailto:tim.tayler@talk21.com">tim.tayler@talk21.com</a> Peter Eastwood <a href="mailto:peter@eastwood.me.uk">peter@eastwood.me.uk</a>	729075 710201 353320
<b><u>Churchwardens</u></b>		
<b>St Mary's</b>	Gordon Howard 4 St Mary's Meadow, Abbots Ann <a href="mailto:gw_eo_howard@btinternet.com">gw_eo_howard@btinternet.com</a>	710830
<b>St Peter's</b>	Jane Eastwood John Milne	353320 361206
<b>All Saints'</b>	Eleanor Jakeman Bill Mitford	362502 357675

Details of church officers and activities can also be found on the village website - <http://www.abbotsann.com/amenitiesservices/church/>

<b>Choir Practice</b>	Thursdays 7.45pm, St Peter's, Goodworth Clatford	
<b>Bell Ringing practice</b>	Thursdays 7.30-9.00pm, St Mary's, Abbots Ann Handbells 7.00pm 1st Thursday each month Tower Captain: Dudley Alleway	710646
<b><u>Parochial Church Council</u></b>		
<b>Secretary</b>	Mrs Jo Brookes 3 Slessor Close, Monxton Road	07967 484581
<b>Treasurer</b>	Jenny Gorski	364196
<b><u>Abbots Ann Magazine</u></b>		
<b>Editor</b>	Andrea Jackson 5 Timothy's Field, Abbots Ann <a href="mailto:editor@abbotsannmagazine.co.uk">editor@abbotsannmagazine.co.uk</a>	710630
<b>Advertising Manager</b>	Mark Stevens <a href="mailto:ads@abbotsannmagazine.co.uk">ads@abbotsannmagazine.co.uk</a>	710908

## SERVICES IN THE BENEFICE IN OCTOBER 2016

Please note change of services and times at all churches.

**Date:** **St Mary's Duties:**

<b>Sunday 30th October</b>	<b>All Saints' Sunday</b>
10.00 Patronal Eucharist	All Saints' (KD/NJ)
<b>Saturday 5th November</b>	<b>All Souls'</b>
15.00 All Souls' Service	St Mary's (KD/NJ)
16.30 All Souls' Service	St Peter's (KD/NJ)
18.00 All Souls' Service	All Saints' (KD/NJ)
<b>Sunday 6th November</b>	<b>Third Sunday before Advent</b>
08.00 Said Holy Communion	St Peter's (KD)
10.00 Sung Eucharist	All Saints' (KD)
10.00 Family Service	St Peter's (NJ)
18.00 Evensong	St Mary's (PE)
<b>Sunday 13th November</b>	<b>Remembrance Sunday</b>
08.00 Said Holy Communion	All Saints' (KD)
10.55 Remembrance Day Service	St Mary's (KD/TT) Mr/Mrs G Howard
10.55 Remembrance Day Service	All Saints' (NJ)
10.55 Remembrance Day Service	St Peter's (PE)
<b>Sunday 20th November</b>	<b>Christ the King</b>
08.00 Said Holy Communion	St Mary's (KD) Mrs N Keene
10.00 Sung Eucharist	St Peter's (KD)
10.00 Family Service (lay led)	St Mary's (St Mary's Team)
16.00 Evensong	All Saints' (TT)
<b>Sunday 27th November</b>	<b>Advent</b>
08.00 Said Holy Communion	St Mary's (NJ) Miss W Casson
10.00 Sung Family Eucharist	All Saints' (KD)
16.00 Evensong	St Peter's (KD)
<b>Sunday 4th December</b>	<b>Second Sunday of Advent</b>
08.00 Said Holy Communion	St Peter's
10.00 Sung Eucharist	All Saints'
16.00 Family Service Christingle	St Peter's
18.00 Evensong	St Mary's
<b>Sunday 11th December</b>	<b>Third Sunday of Advent</b>
08.00 Said Holy Communion	All Saints'
09.30 Sung Eucharist	St Mary's Mr/Mrs G Howard
11.15 Sung Matins	St Peter's
18.00 Christingle	St Mary's

*Anyone unable to carry out their duty and who cannot exchange with another sidesman please contact Kate Bennett or Wendy Casson on 712028. Please note that services are provisional as changes can sometimes be made at short notice. Please check the Sunday Link Sheet.*

## BENEFICE DIARY - NOVEMBER 2016

1 Nov	(Tues)	<b>11.15am</b> Said service of Morning Prayer, St Francis Chapel in St Peter's Church
		<b>7.00pm</b> Goodworth Clatford Parish Council meets in GCVC
2 Nov	(Wed)	<b>7.00pm</b> The Wednesday Bridge Club (Partnership Meeting) in GCVC
3 Nov	(Thurs)	<b>10.30am</b> Goodworth Clatford WI Coffee Morning
		<b>2.30pm</b> The Old Dairy Farm, Hatherden, Anne Sebba "Les Parisiennes: How the Women of Paris Lived, Loved and Died in the 1940s".
		<b>7.00pm</b> Abbots Ann Parish Council meets in AA War Memorial Hall
		<b>7.00pm</b> Hand Bell Ringing at 9 Catherine's Walk.
		<b>7.45pm</b> Benefice Choir Practice, St Peter's
5 Nov	(Sat)	All Souls Commemorative Services – see page 2
6 Nov	(Sun)	<u>(The Third Sunday before Advent)</u> All Saints' Patronal Festival - full service details – page 2
		<b>6.00pm</b> Abbots Ann Fireworks Night - all details page 19
		<b>8.00pm</b> Eagle Pub Quiz, Abbots Ann
7 Nov	(Mon)	<b>12.30pm</b> Way Inn Lunch at St Peter's
8 Nov	(Tues)	<b>11.15am</b> Said service of Morning Prayer, St Francis Chapel in St Peter's Church
		<b>12.30pm</b> Meadow Room Lunch at All Saints'.
9 Nov	(Wed)	<b>2.30pm</b> The Old Dairy Farm, Hatherden, Alison Weir "The Lost Tudor Princess and Katherine of Aragon".
		<b>7.00pm</b> The Wednesday Bridge Club meets in GCVC
		<b>7.30pm</b> Upper Clatford Parish Council meets in UC Memorial Hall
		<b>8.00pm</b> Abbots Ann War Memorial Hall Annual General Meeting - p7
10 Nov	(Thurs)	<b>7.30pm</b> Bell Ringing Practice at St Mary's.
		<b>7.45pm</b> Benefice Choir Practice, St Peter's
11 Nov	(Fri)	<b>5.00-7.00pm</b> Pizza Night at Abbots Ann Village Shop - page 10
		<b>7.30pm</b> Quiz Evening & Supper - page 6
13 Nov	(Sun)	<u>(The Second Sunday before Advent)</u> Remembrance Sunday - full service details – page 2
		<b>1.00pm</b> Remembrance Sunday Curry Lunch at GCVC - page 5
		<b>8.00pm</b> Eagle Pub Quiz, Abbots Ann
<b>15 Nov</b>	<b>(Tue)</b>	<b><u>12.00noon Deadline for receipt of copy for the December 2016 Abbots Ann Magazine</u></b> <a href="mailto:editor@abbotsannmagazine.co.uk">editor@abbotsannmagazine.co.uk</a>
		<b>10.00am to 11.30am</b> in St Peter's Room – Goodworth Clatford Community Coffee Morning.
		<b>11.15am</b> Said service of Morning Prayer, St Francis Chapel in St Peter's Church
		<b>7.30pm</b> Goodworth Clatford WI meets in GCVC
16 Nov	(Wed)	<b>7.00pm</b> The Wednesday Bridge Club at GCVC
		<b>7.30pm</b> Upper Clatford WI meets in Upper Clatford Memorial Hall.
17 Nov	(Thurs)	<b>2.30pm</b> The Old Dairy Farm, Hatherden, Rachel Joyce "A Snow Garden"

An amateur production by the Abbotts Ann Players

# Snow White

DECEMBER 2016

Friday 2nd, 7.30pm

Saturday 3rd  
2.00pm & 7.30 pm

Sunday 4th, 4.00pm

Tickets available from  
Abbotts Ann Village Shop

£6 Adults

£4 Concession

£16 Family

Directed by Andrew Hayter

Produced by Lisa Hillier

Written by Alexandra Slater

Abbotts Ann  
War Memorial Hall

## Dear Friends

One of the great joys and of course responsibilities of school life is joining students on trips, and I was very fortunate to tag along on many during my time as a school chaplain. One of the most special was the annual three day trip with Year 9 to the Western Front Battlefields of Ypres and The Somme. It was always incredibly moving reading the names, ages and messages on the graves in the Commonwealth War Grave Cemeteries, as well as the challenge of the German cemeteries, with their darker more sombre appearance and huge numbers of men buried. Whilst trying to grasp the enormous loss of life, and the effect on parents, children and sweethearts back home, we also heard stories of individuals, often related to a member of our group, which helped to us to relate on a more personal level.

In June this year we were able to include a stop at a small Battlefield Cemetery at Morchies on The Somme. In this cemetery is buried a young man called Norman Dunlop, killed less than 2 months before the end of the war aged 20 years. He was the only son of his Scottish parents and my paternal grand-father's best friend. Five years after the war, my father was born and given the name Norman in memory of Norman Dunlop. It is hard to put into words how it felt to be there at his graveside all these years later.

Many families and many of you reading this, will have similar stories to tell from wars long ago. And living in these villages are many who have more immediate experience of war and the loss of friends and family. At 10.55am on Sunday 13<sup>th</sup> November, we will gather in each of our churches in remembrance and honour of those who have paid the highest price. Please do join us.

November is a month for looking back and remembering the past 'Remember, remember the...'

On the fifth of November this year, each of our churches is offering a service to remember those we love but see no more. A simple, short service it offers us the opportunity to give thanks and remember all they meant and continue to mean to us.

If all this sounds a bit sombre, the end of the month sees the start of Advent on Sunday 27<sup>th</sup> November. As well as looking forward to Christmas, Advent is a season of hope when we anticipate a future when wrongs will be put right, wars will be no more, broken bodies will be fixed, hurts will be healed, tears wiped away and God will live with his people.

The symbolic image of a candle burning in the night, reminds us that just a small flame can push back darkness. Do join us if you are in need of a little

light in your life or if you want to pray for light in the dark places of the world.

You will be most welcome at any of our services this November!

*"The light shines in the darkness and the darkness has not overcome it."*  
*John chapter 1 verse 5*

## Katrina

### ST MARY'S CHURCH FLOWERS - AND HOLY DUSTING ROTA

We are so grateful to you all for giving up your time to the Church. Here is the rota. If the dates are inconvenient and you are unable to change with someone else, please ring Sylvia Burson (710852) for flowers and Jill Tayler (710201) for dusting.



#### Dates:

21 Oct - 3 Nov

4 Nov - 17 Nov

18 Nov - 1 Dec

2 Dec - 15 Dec

16 Dec - 29 Dec

30 Dec - 12 Jan

13 Jan - 26 Jan

27 Jan - 9 Feb

10 Feb - 23 Feb

#### Flowers:

Gwen Pollard

Elizabeth Howard

(Remembrance Sunday)

Advent

Advent

Christmas

Sylvia Burson

Cathy Seabrook

Margaret Hind

Margaret Hind

#### Dusting:

Dee Howarth

Hannadore Whitcomb

Elizabeth Palmer

Polly Whyte

Jill Tayler

Margaret Brooks

Liz Tout

Sheila Robinson

Audrey Cresswell

### From The Registers

#### Holy Baptism

Montgomery Alexander George Hall was baptised on Sunday 25th September at All Saints'.

#### Rest in Peace

The funeral of Pamela Ann Bird was held on Friday 30<sup>th</sup> September at All Saints'.

#### Burial of Ashes

The ashes of Richard Stanley were buried on Wednesday 14<sup>th</sup> September at All Saints'.

*If you do not wish to have the information from the registers published, would you please contact Rev. Nicky Judd on 01264 729075.*

When they are ready, the genitals are extended. Both slugs can mate reciprocally with each partner inseminating and being inseminated. Slugs practice the rather odd (and unenviable) process of apophallation, whereby the male genitals are gnawed off. The dispossessed slug then continues life as a female. Fertilisation occurs when conditions are right for hatching. In tough times, slugs can fertilise themselves. Hence the reason they are so difficult to get rid of! We are all morbidly fascinated by this and she did take some excellent photographs (which I hope to put on my blog some time in the next few years ...)

The most thrilling discovery - possibly of the year - comes towards the end of the month after a couple of wildly windy days. I have just collected the Eldest from somewhere (I lose track) and as I'm parking the car in the fading light, I notice something hanging in the tree. I stop the car and when the Eldest realises what I'm looking at, she too is intrigued. Is it some kind of a bird? All I can see is a large eye and as we get closer I gasp in astonishment. It's a butterfly! A flipping huge butterfly! Its eyespot is enormous and with its wings closed it's about 4" high. Up close I can see that its wings have been pretty battered and there's a big chunk missing out of its upper wing. We break off the small branch it's attached to and I take it inside. GD and the Littlest are utterly stunned by it. It really is impressive. But it is looking in bad shape so we put it into the quiet of the conservatory with some sugar water. The Tribe watch with fascination as the butterfly uncurls its long proboscis. The proboscis is coiled under its head when not in use and is then just like a straw used to suck up nectar from plants. Our rescued butterfly begins to drink and the following day it begins to fly about a little. I'm surprised given its wing damage. As its wings open, we are rewarded with a striking iridescent deep blue and turquoise. Wow. When I walk into the room and quietly find the butterfly, it is sitting with wings outstretched soaking up the warmth of the sun. As it senses me being there, it closes its wings and shows its eyespot in order to protect itself from possible predators. I discover that it is a male Giant Owl Butterfly and they are found from Mexico through Central America, to the Amazon in South America. And now, in Abbotts Ann! They are nocturnal, living in rainforests and feed on rotting fruit, particularly bananas. Their name reflects the extraordinary eyespot that resembles an owl's eye. The tattered wings could show the age of the butterfly - they become more damaged with age. The reason the butterfly didn't move when we found it, is that they are unable to fly in cold weather. Because of their size, they are unable to fly far, so I have no idea how this one came to be in our garden. The only reference that I can find of the species being found in the UK was in Yorkshire in a shipment of bananas back in 1926 ... Unfortunately, our Giant Owl Butterfly only survives a few days, but we feel incredibly privileged to have had such an exotic and rare visitor.

Mother of the Tribe [www.lifewiththetribes.com](http://www.lifewiththetribes.com)

## LIFE WITH THE TRIBE - SEPTEMBER 2016

On the first day of September we head to Stockbridge and the National Trust's Common Marsh for our final 'family' day before the Tribe start back to school. It is a beautiful, blue skied warm day. Astonishingly, there are only a handful of people on the Common - is it because they see us coming or has everyone just headed for the beach?? Last year the National Trust constructed a fence along the riverbank here to prevent access to the river by livestock, dogs or people. It has been very successful with the recovery of the vegetation along the bankside which has subsequently stabilised the extremely eroded banks. Due to the success, the fencing has now been extended to the ford



area further down. The water of the River Test is gin-clear and now that the fencing is in place, we see moorhens have made a nest in the middle of the river and two parents are busily feeding their one remaining chick. Dragonflies are lazily flying along the riverbank. Dragonflies spend most of their lives as nymphs, underwater - sometimes for more than two years. When they emerge in the summer, the opalescent dragonflies that we see, only live for about a month. We catch sight of a water vole swimming into the undergrowth on the opposite bank - they have been in decline here, but perhaps with the improved bank management, they may be on the increase. Let's hope so. The Tribe always associate seeing water voles with the much loved character 'Ratty' in Wind in the Willows - despite the name, Kenneth Graham based Ratty on a water vole. There are a few horses grazing on the common. They belong to local commoners - a commoner of the land being anyone living in the borough of Stockbridge. There have been commoner's rights on the marsh since the 1300s. It is also a site of Special Scientific Interest, a haven for a wide range of birds and butterflies. Further on, the Tribe step across some peaty hummocks and, fishing nets in hand, they attempt to catch the tiny little fish that can be seen as flashes of silver in the water. Once they get the knack, they catch them easily and bring them out for only a brief time to do a quick study before releasing them back into the water. Ice creams beckoning, we head back to the bustle of the High Street.

On another, rather damper day, GD finds an extraordinary sight - mating slugs. Slugs are hermaphrodites - they have both male and female genitalia under their mantels. Mating begins as the slugs encircle each other in some bizarre slug-dance and exude a heavy (or disgusting, take your pick) layer of slime.

## SERVICES OF LIGHT AND REMEMBRANCE AT ALL-SOULS'-TIDE

The annual services at which we remember our loved ones who have died will take place this year on Saturday 5th November. There are forms in the churches and in Abbots Ann and the Clatfords' Village Shops where you can write the names of those you would like to be commemorated during the prayers. If it is more convenient, you are welcome to send names to Nicky Judd via e-mail on [clive@judd47.plus.com](mailto:clive@judd47.plus.com), mentioning the name of the church at which you would like them read. Everyone is welcome to attend one of these services. They will be at

3.00pm at St Mary's

4.30pm at St Peter's

6.00pm at All Saints

*Nicky Judd*

### **Remembrance Sunday Curry Lunch Sunday 13<sup>th</sup> November at 1pm Goodworth Clatford Village Club**

This year it is Goodworth Clatford's turn to host the Annual Curry Lunch at the Village Club. There will be a bar and a raffle.

Do come and help raise money for the Earl Haig Fund!

Tickets which cost £10 are available from the Clatford Village Stores or may be reserved by phoning Jane Eastwood on 01264 353320

### **ALL SAINTS' TIDE QUIZ SATURDAY 29TH OCTOBER at 7.30pm VILLAGE HALL, UPPER CLATFORD**

Tickets £12.50 (including a hot meal) from:  
Jane Kennedy (Tel:323804), Sylvia Kennedy (323226) Betty Armstrong,  
mily Fabricius, and Margaret Prior

### **EDITOR'S NOTE:**

All articles printed in the Abbots Ann Magazine are printed in good faith and are not necessarily the views of the Editor. All contributions must be accompanied by a full name and email address which may be withheld at the Editor's discretion. The Editor reserves the right to amend all contributions. Please support our advertisers; they support the magazine.

### MORNING PRAYER

There is a said service of Morning Prayer at 11.15am every Tuesday in St Francis Chapel, which is the chapel on the right hand side in St Peter's Church. The service lasts about half an hour and is usually taken by Nicky Judd. All are very welcome to attend.

*Peter Eastwood*

### POPPY COLLECTION 2016

This month will see our stalwart team of volunteers coming "Door to Door" collecting on behalf of the British Legion Poppy Appeal.

Unfortunately as no-one has come forward to take over from me as the Abbots Ann representative/organiser, it will be the last door to door collection on behalf of this Charity.

Abbots Ann has always had a strong following and achieved amazing fundraising for the Poppy Appeal in the past. It is very sad that it will come to an end, but as is the case in many organisations, it is not easy to find willing a replacement.

So please give your support to our lovely team as they venture round. My thanks to them, for the years they have given trudging the streets of Abbots Ann and to you the public for your generosity.

Should someone decide they would like to see our village support continue and are willing to take on the organising of it, please text me on 07742657850  
Many thanks

*Jackie Stanton*

Abbots Ann Conservatives  
invite you to our

## **QUIZ EVENING & SUPPER**

**ON FRIDAY 11TH NOVEMBER 2016  
at 7.30 pm**

Abbots Ann War Memorial Hall

Tickets £10.00 (to include supper)

Available in advance in advance from

Michael Pugh (Tel: 711158) or Biz Shaw (Tel: 710197)

**BRING YOUR FRIENDS AND YOUR BRAINS**

## **The 2017 All Saints Winter Lectures, Upper Clatford.**

**Monday 16th January 2017**



**James Landale**  
**BBC Diplomatic Correspondent**

**Brexit: what happens now? A diplomatic correspondent's view.**

**Monday 30th January 2017**



**Matthew Dryden MD FRCPATH, FRCPS, FRGS**

**Antibiotic Armageddon and Plagues – The end of medicine as we know it?**

### **Tickets and Venue**

#### **Price**

The cost is £12.00 per person. Please make cheques in favour of "All Saints Church".

#### **Tickets**

Tickets can be bought at *Clatford Village Store & Post Office, The Abbots Ann Village Store and The Crook and Shears*. You can also contact Nicki Crosthwaite Eyre (01264 35 25 30 or e-mail: [Nicki.eyre@talktalk.net](mailto:Nicki.eyre@talktalk.net)) and send her a stamped addressed envelope to The Old Malthouse, Upper Clatford, Andover, SP11 7QL, stating the number of tickets.

#### **Time & Venue**

Doors open at 7pm and the lectures start at 8pm at the King Edward VII Memorial Hall, Upper Clatford, SP11 7QL. Parking is available behind the hall.

Funds raised will be shared between All Saints PCC and a charity to be announced on the day.

# Andover Film Club

for moving pictures

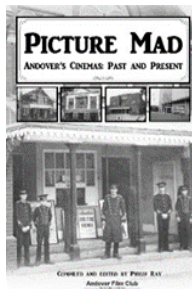
Do you enjoy great films and live near Andover? On the 2<sup>nd</sup> Monday of the month, and in the comfort of the local ODEON cinema, we bring films to the town that wouldn't normally come here. From independent titles to world cinema we show films that deserve to be seen on the big screen.

Recently we've shown *Taxi Tehran*, *Carol*, *Gemma Boverly*, *Au revoir les enfants* and *Love & Friendship*

**Non-members welcome. Admission £6.50**

[www.andoverfilmclub.org](http://www.andoverfilmclub.org) email: [info@andoverfilmclub.org](mailto:info@andoverfilmclub.org)

Available now: **PICTURE MAD**, our book on the history of Andover's cinemas. Available to buy at Andover Museum or [amazon.co.uk](http://amazon.co.uk). The Savoy, the Rex, the Odeon and much, much more. 160 pages, £7.50



**THERMAL IMAGING**  
***Do you have high heating bills***  
***Are you wasting energy?***

**AAGA will arrange a thermal imaging survey of your house at the cost of £10 to help you find where you are losing heat without realising it, and where you could save energy.**

**Contact: Ann Hopwood tel: 710090**  
**Email: [jann.hopwood@gmail.com](mailto:jann.hopwood@gmail.com)**

## **ABBOTTS ANN WAR MEMORIAL HALL** **ANNUAL GENERAL MEETING** **Wednesday 9th November 2016** **8.00pm in the Main Hall**

All residents are welcome at this meeting, which is required by the Hall's Constitution. Please come along and give us an hour of your time (that's all, promise!) together with your views, thoughts and ideas, as we receive the Chairman's Report, the Treasurer's Report and Accounts, and as we decide - with you - what and where next for the future of your War Memorial Hall.

*Graham Stallard - Secretary and Trustee, Abbots Ann War Memorial Hall*

## **ABBOTTS ANN WAR MEMORIAL HALL** **VACANCY FOR TREASURER**

The Hall is currently operating without a Treasurer, and we urgently need a volunteer for this unpaid community role. It involves banking all the hire receipts and other monies, holding the cheque book/petty cash to pay suppliers, and then reconciling the ins and outs on a monthly basis. You need to be numerate and IT literate, but you do not need to be a qualified Accountant. The Committee you will be part of is highly supportive, friendly, and fun. If you think you or anyone else could help, please call me on 01264 710616 or email [graham.p.stallard@gmail.com](mailto:graham.p.stallard@gmail.com)

Without a Treasurer, we cannot deal with hirers or suppliers, and we will need to consider at the AGM on 9<sup>th</sup> November how we can change the services that the Hall provides to the village to manage bookings and suppliers in the absence of a Treasurer. So, if you can help, please come forward now, so that we can avoid making such changes.

Thank you!

*Graham Stallard*  
*Secretary and Trustee, Abbots Ann War Memorial Hall.*



## ABBOTTS ANN WI - SEPTEMBER 2016

The month started for us, as for so many in the village, with a busy day at Abbots Ann Fete. We didn't stop; from the moment we arrived at 9.30 am to start our set-up until the end of the afternoon, possibly a little earlier than usual due to the inclement weather, when it all had to be packed away again. Nevertheless, our hard work was rewarded with another stunning result. So thank you to everyone who contributed in any way to our success, whether you baked us a cake (or in several cases, cakes), helped on the day or came and indulged in tea and cake. We couldn't have done it without you.

Several of our members also found time to enter the various classes of the Flower & Produce show and congratulations to Charlotte Pearce who won two trophies only open to WI members.

Nothing about our return to the village hall this month was as advertised. Firstly our planned speaker had to cancel due to health problems and then our own President had to admit defeat, as she wasn't feeling up to par, and at the last minute had call on the services of our Vice-President. No-one walked out in disappointment thank goodness, so the evening carried on with Nigel Knott kindly stepping in at the last minute to talk about Canine Partners.

For most of us when we think of carers we think of humans, whether it is family, friends or professionals, but on this occasion Nigel was here to tell us about the four-footed form. Having a specially trained dog that can carry out many tasks, such as helping to get dressed, push buttons on ATM or washing machines, open and close doors, can transform the lives of people who for whatever reason are now dependent on others. Canine Partners is a very small charity, with a small salaried staff (only 18p in the £ goes on admin) but with a large number of willing volunteers. It costs £20,000 to train a dog and between 50 - 60 new partnerships are created every year and it is the dog that chooses the person, rather than the other way round. The Charity is not Government funded and donations are always welcome. Canine Partners do not cold call and to be on their mailing list one must individually apply. If you wish to discover more Nigel mentioned that they have a display on at Andover Library from 5th December.

Members will be knitting again during the winter months, as a thank you letter had been received from a Charity working in Romania for a parcel of jumpers sent some months ago. Our members have for some years knitted for the children of Zimbabwe, but due to exorbitant charges imposed on the parcels this had come to an end unfortunately. Now we know they are still much needed and appreciated, in particular in the larger sizes, then undoubtedly there will be much needle clicking in the coming months.

We would love this to be an exciting project for the village in 2017, so please do get involved.

*Lorna Haigh*

**Abbots Ann  
Primary School  
Christmas  
Bazaar 2016**

**November 26th, at 1pm**

*Fantastic Seasonal Crafts, Local produce, Games,  
Raffle, Refreshments  
And  
flying in for one afternoon only  
Father Christmas*

**Craft stalls still available, £10  
a table.**

**BOOK NOW.....**  
(new layout with extra Stalls added for 2016)

Contact: Rachel 07505807540,  
email: [Rachel.ewatkins@btinternet.com](mailto:Rachel.ewatkins@btinternet.com)  
School Office: 01264 710244

## **ABBOTTS ANN HAS ADOPTED THE PHONE BOX (KIOSK)** **OUTSIDE THE VILLAGE HALL**



When Sir Giles Gilbert Scott's red telephone box was introduced in the 1920s, few could have known that it was destined to become an enduring icon of Britishness.

The equipment of our Abbots Ann kiosk has been removed and it is no longer a working telephone box. There are no plans to move the box and it will remain in the centre of the village.

- **Firstly, the kiosk is in need of some tender loving care. We have a painting kit and now need friendly volunteers to clean and paint the box.**
- **Once spick and span and returned to its gleaming red glory, the question is how do we use our newly acquired asset?**

Here are some suggestions of how these redundant iconic phone boxes have been used in villages around the country:

1. Library
2. Space for art installations
3. Village Organisations - 'host the kiosk' for a specified time.
4. Changing photographic display – village orientated, history, people, events and locations.
5. Village Tourism office
6. A smokery ( Jamie Oliver) ??
7. Flower Display

Should you have any other suggestions, we would be delighted to hear from you.

**We would like to paint the box before Christmas, so for this and for suggestions of future use, please contact Lorna Haigh on 01264 710174 or [cll.lornahaigh@gmail.com](mailto:cll.lornahaigh@gmail.com). Suggestions will be welcome until 30<sup>th</sup> November 2016.**

**The Parish will then get the chance to 'vote on the new use of this iconic asset'. People will be able to vote via Abbots Ann's website and in person at the village shop. Voting will close on 31<sup>st</sup> January 2017.**

Some of our members will be wandering down memory lane this month as Jill Hannington is going to tell us about old Andover, although, for many this will be unfamiliar territory. 7.30 pm in the Village Hall on 24<sup>th</sup> November if you want to discover more.

*Sharon King*



### Arranging Live-in Care Across Hampshire

97% of people would prefer to be cared for in their own home\* Having a live-in carer makes this possible.

**Family Business • Local  
Reliable • Trustworthy • Responsive  
Peace of Mind • Security • Companionship  
Home Cooked Meals • Housekeeping  
Personal Care • Living life your way  
Expertly trained Carers • Choice of Carer  
Continuity of Care**

“Access Care came to our rescue within 24 hours of contact. A professional and fulsome initial meeting was held and within another 24 hours, a full-time carer was identified and in place. I would have no hesitation in recommending Access Care to other families in need of 24-hour care for any loved one.”

Freephone **0800 980 3958**  
sacha@access-care.co.uk • [www.access-care.co.uk](http://www.access-care.co.uk)

\*One Poll Research from the Care Choice Gap Report 2014

## **NEWS IN BRIEF**

The recent **School Jumble Sale** raised £990. This is a wonderful amount which will be put to very good use! Huge thanks to the village for their donations.

**Carol Concert - the Harmonium Singers**, St Mary's Church, Andover Saturday, 17<sup>th</sup> December 2016 at 7.30pm In aid of Andover Foodbank £10 at door (incl. refreshments), or £8 from Newbury Building Society, The Lights and choir members Under-14s admitted free

**Britten's Ceremony of Carols**, featuring local harpist, Lydia Morrell and the Wherwell Singers. Saturday 10<sup>th</sup> December at 7:30pm, St. Peter & Holy Cross Church, [www.wherwellsingers.org](http://www.wherwellsingers.org), email the Wherwell Singers at [info@wherwellsingers.org](mailto:info@wherwellsingers.org), or call 01264 720529.



## ABBOTTS ANN VILLAGE SHOP & POST OFFICE

**Shop Manager:** Tim Abram  
**Deputy Shop Manager:** Carol Murphy  
**Sub Post Mistress:** Maureen Flood

### Didn't We Do well!

Thursday 22<sup>nd</sup> September was rather like a night at the Oscars. It was the annual gathering of local businesses which have been nominated for the Test Valley Business awards. Abbots Ann Shop and Post Office had been nominated in the category "Doing Business Locally" and I am proud to report that we were runners up out of over thirty nominees. It was a wonderful evening. Congratulations to Tim, Maureen, all the staff and the volunteers - a great team.

Gordon and I attended this prestigious evening and had a great time. Then to top it all, Tim has received a congratulatory letter from our local MP Kit Malthouse. The certificate we received is on display in the Shop window.

### November Fayre

It is that time of year again – Christmas is coming! Join us on Saturday 19<sup>th</sup> November for our annual pre-Christmas Fayre.

Order your Christmas meats, fruit, vegetables and other delicacies in advance, with orders taken at the Fayre qualifying for a discount. Hopefully, there will be other stalls (stall holders please let us know if you would like to join us). So see you on Saturday 19<sup>th</sup> November.

**Make a note now.**

### Re-vamp

We apologise for the disorganised shelving for household goods and toiletries. We hope that with our newly built shelving this will soon be resolved. Meanwhile, if you cannot find what you want, be it washing powder, steradent, etc., please ask.

### Pizza Night

Remember that we stay open until 7 pm every Friday night, with one Friday per month being our Pizza night.

### Order your Pizza for

**Friday 11<sup>th</sup> November - 1700 to 1900**

**Place your order beforehand for collection at a time convenient for you.**

*Elizabeth Howard  
Shop Volunteer & Committee Member*



**TICKETS ON SALE IN THE  
VILLAGE SHOP, THE EAGLE  
& SCHOOL OFFICE**

# **ABBOTTS ANN FIREWORK DISPLAY & BONFIRE NIGHT**

*Raising money for our village school & sports field!  
Arranged by Abbots Ann PTA & the Sports Field Committee*

**ON  
SUNDAY 6th November**

**5.30pm Gates Open**

**6.00pm Guy Parade & Competition**

**6.30pm Lighting of the Bonfire**

**7.15pm Fireworks Display by PyroFantasia**



**FAMILY Ticket: £12.00**  
**2 ADULTS & 2 CHILDREN U16**  
(£15.00 on the night)

**ADULT Ticket: £5.00**  
(£7.00 on the night)

**CHILD (3 to U16yrs) Ticket: £4.00**  
(£5.00 on the night)

**Free Parking Available**

**Food & Drink**

**Entry onto Sports Field via Bulbery (car/pedestrian)  
Or from Webbs Lane (pedestrian only)**

**PLEASE NO SPARKLERS THANK YOU**

Still plagued by illness and with an irreplaceable hole in his heart where Jill's love had been he nonetheless developed a new life.

He visited Jill's grave every day. He maintained his commitments to family and church but now seemed to devote all his spare time to the care of others. He was indefatigable, visiting newcomers, the sick, lonely and bereaved, 'rejoicing with those who rejoiced, weeping with those who wept' – as it says in Romans.

Turning up unannounced, immaculately dressed, with a quiche, flowers, or a bottle of wine he brought sympathy, welcome and practical assistance to many, many people. When my son was serving in Afghanistan Andrew prayed for him every day, one of a long list for whom he cared.

Andrew was a careful listener who saw the good in everyone and worked hard to maintain and improve relationships within the village. He was a natural conciliator and, like most bankers, a good judge of character.

I never saw him angry but with charm and patience he worked doggedly to mend fences when the church community was fractured. He could be outrageously flattering. I last saw Andrew in the hospice a week before he died. When I suggested my visit was over-taxing him he said "Tim, you could never bore me". Many of us benefited from his love of cooking or enjoyed a drink of Cottonworth wine at April Cottage.

Very independent, he would have hated living in a care home - 'soft prisons' he called them. He was decisive and straightforward. If he didn't agree with what someone said, he would say so – directly but always very kindly. For Andrew was an extremely kind man. Walking home from church one morning with friends we came across a pigeon with a broken wing. As the rest of us agonised over what to do there came a loud 'thwack' from Andrew's stick and the matter was resolved.

#### **He was immensely proud of his family**

Andrew liked to receive compliments but he was very modest. His only boast was the achievements of his children and grandchildren – of whom he was always immensely proud.

Many in Abbots Ann shed a tear when Andrew died because he enriched the lives of everyone he met. He has left us an extraordinary example of how to lead a Christian life in the service of others. I have never met anyone who did this so well. **That** was his gift to us – and we will **treasure** it.

## **ABBOTTS ANN POST OFFICE**

### **One4all Gift Cards**

A One4all Gift Card is a smart, convenient gift to mark an occasion e.g. Christmas, birthdays, treat a loved one or just to say 'thank you'.

- Choose from a wide range of designs.
- Flexible: load anything in full pound denominations of £10 to £400.
- Multi-store Gift Card: can be used in over 22,000 outlets and with many online retailers.

**Can be used in over 22,000 retailers** including Amazon, Argos, Boots, B&Q, Currys, Debenhams, Hamleys, House of Fraser, JJB Sports, John Lewis, Marks & Spencer, New Look, Pizza Express, River Island, T.K.Maxx, TopShop, WH Smith and many more.

**Pay for all or part** of your purchase. If you don't spend the full amount, the balance remains on the card. **There's no rush to use it** as your One4all Gift Card will remain valid for as long as there's money on it. Expiry dates may apply depending on purchase date. Fees and charges may apply.

### **Latest recommended posting dates for 2016**

#### **International Economy (formerly known as Surface Mail)**

Thursday 3rd November - Eastern Europe, Greece, Cyprus, Turkey, Malta, Iceland

Thursday 17th November - Western Europe

#### **International Standard (formerly known as Airmail) & all International Tracking and Signature Services (formerly Airsure & International Signed for)**

Saturday 3 <sup>rd</sup> December:	Africa, Middle East
Wednesday 7 <sup>th</sup> December:	Cyprus, Asia, Far East including Japan, Eastern Europe, (except Poland, Czech Republic and Slovakia)
Thursday 8 <sup>th</sup> December:	Caribbean Central & South America,
Saturday 10 <sup>th</sup> December:	Greece, Australia, New Zealand
Wednesday 14 <sup>th</sup> December:	Czech republic, Italy, Poland
Thursday 15 <sup>th</sup> December:	Canada, Finland, Sweden, USA
Friday 16 <sup>th</sup> December:	Austria, Denmark, Netherlands, Norway, Portugal, Slovakia, Spain, Switzerland, Belgium, France, Ireland, Luxembourg
Saturday 17 <sup>th</sup> December:	

#### **UK**

Tuesday 20th December	2nd Class and 2nd Class Signed For
Wednesday 21st December	1st Class and 1st Class Signed For
Thursday 22nd December	Special Delivery Guaranteed

**Letters to Father Christmas** – Stamped envelope including full name & address for a reply by Friday 9<sup>th</sup> December: Father Christmas, Santa's Grotto Reindeerland, XM4 5HQ

*Maureen Flood - Sub Post Mistress*

## **CLATFORD VALLEY GARDENING CLUB**

Whether you have fruit trees in your garden or not you couldn't fail to be impressed by September's speaker, Peter Barwick. Peter had a very impressive CV but in particular he had a wealth of experience at Blackmore Estate where he worked for 21 years and managed 50 acres of nursery where 300,000 tons of apples are grown each year.

**Controlling weeds** Perennial weeds can be a real problem if you are growing fruit trees so Peter recommended using weedkiller in mid summer, again 3-4 weeks later and then again in late September. He advised the use of Roundup mixed with SBK, and sprayed on to the trees with a fine rose.

**PH of your soil** Chalk is a problem and Peter recommended adding ericaceous compost and leaf mould when planting the trees and also add 50g of slow release fertiliser such as Osmocote in the autumn which should last until March.

**Space** Fruit trees are grown on root stocks which determine how big a tree will grow and help you decide which variety to grow in your garden. Root stock M27 will suit a very small space, M9 a slightly bigger area, M26 would be the next size up and for a huge area MM106. Although Cox's used to be most widely grown, they have been superseded by Gala which can be rather bland. Peter suggested that bare rooted trees should be planted in the autumn and before March and if you have a deer problem then grow half standards.

**Pollination** is crucial if a tree is to produce fruit. Apples and pears are not self fertile although peaches and cherries can be. It could be a crab apple in your neighbour's garden, as long as there is another tree near by. Needless to say we also need bees!

**Pruning** Apples are like climbing roses, they flower better on horizontal branches and will produce more fruit. If branches are growing vertically Peter recommended tying them out to keep them in a horizontal position rather than tying them downwards. He was keen to inform us that contrary to many books, one year's growth should be left to fruit the following year and not be cut back by 50%. He suggested that you should leave 25% of one year wood and the same amount of two year wood. Take out some of the old uprights and train others to grow horizontally. He recommended reading The Apple Pruning manual which costs £10 and in his opinion is the best.

Peter also went on to discuss what to do about diseases such as scab and mildew. He said that scab on apples is the same as black spot on roses and should be treated in the same way. He did not recommend storing apples in paper or closed drawers but leave them in a cool dark place with ventilation such as an old slatted fruit box.

Peter was very informative and knowledgeable and I hope he comes to visit us again perhaps to talk about soft fruit next time.

development, working hard to bring out talent. They found roles for those who were not cast in school productions; Jill ran up splendid costumes; and they held extra lunchtime rehearsals to ensure performances went well. Consequently, Andrew's plays were very popular with parents and children alike. (Aly Godman, the current Fun Club leader, has displayed photos of Andrew's productions on their board at the back of the church.)

Andrew never stopped helping the Fun Club. He raised significant funds for St Mary's, putting on classical concerts and becoming a music promoter for the talented young musicians of Abbots Ann, many of whom had been at the Fun Club. The last of these was just two months before his death. The tributes paid that evening to Andrew by the excellent performers – many now at university – were very touching. I cannot think of anyone who engaged so well with every generation.

He and Jill also ran a Bible study group which Andrew continued to attend until a few months ago. An enthusiastic and well-read Biblical scholar, his opinions, based on extensive research and visits to the Holy Land hugely enriched our conversations. It was a great pleasure to listen to him describe where some miracle occurred and hear trenchant views on the social background of the disciples.

Andrew loved history; he read widely; and was a keen follower of horse racing. He regularly, and generously, provided Sally Dashwood with a day's fly-fishing together. She drove while he or Jill provided lunch. Even as his eyesight failed his ability never left him. Like everything he turned his hand to, Andrew did it well - and with such grace.

### **Jill's death was devastating**

Many here will remember Jill and Andrew's 50<sup>th</sup> wedding anniversary celebrations in 2008. Andrew praised his kind and constant companion of so many years and described himself 'a happy old man!' They were clearly a couple very much in love - with each other and with life.

A year later however Andrew needed a major operation which carried significant risk. We prayed anxiously for a happy outcome. Yet while Andrew was in hospital Jill contracted a virulent gastric bug and died in her sleep from pneumonia. We were utterly, utterly shocked.

### **Andrew continued to serve others**

Andrew received this devastating blow with dignity and great courage.

join the pension scheme. This is provided the contract for services is properly drawn up - HM Revenue and Customs is notorious for trying to claim that the so-called self-employed are really employees, with all the increased income to the Treasury this entails.

Jim, Sir Humphrey and Bernard (the foxy one) have not a fast motorway ahead, but rather a tortuous scramble through a very brambly jungle!

*Rosemary Groves*

*The following is the eulogy given by Tim Taylor at Andrew Liddell's funeral on Wednesday 12th October 2016.*

### **ANDREW LIDDELL**

**10th October 1926 - 22nd September 2016**



#### **Andrew Liddell – life in Abbots Ann**

On the morning after Andrew died the church bell tolled 89 times. This village custom marked the passing of someone who was dear to everyone here today.

#### **How Andrew came to Abbots Ann**

Andrew and Jill came to Abbots Ann from Wandsworth in 1998, to be close to their family who had moved to Hampshire a year before.

#### **Life in the community with Jill**

They were soon energetic members of the village, early supporters of the community shop and very active at church. Andrew became PCC treasurer and Jill church warden. They introduced the practice of serving wine at PCC meetings which Jill found less bother than making coffee whilst Andrew felt it made us more generous. They complemented each other well. Jill was charming; Andrew, urbane. He had a great capacity for hard work and retained a sharp intellect to the end.

They were founder members of St Mary's Fun Club at Abbots Ann School. This is a church after-school club for pupils in their final year and Andrew's greatest contribution was to write six plays for the children to perform. These well-researched productions were big events in the Fun Club calendar.

Andrew and Jill loved children and took a close interest in their

Jenny asked everyone to think about outings for next year which could be at any time of day. She also asked if anyone would like to join the committee in the future.

There will be no speaker on the 26th October as we will have our AGM and on the 23rd November we will have our annual Christmas dinner .

Happy Christmas everyone!

### **UPDATE FROM ABBOTTS ANN FETE COMMITTEE AGM**

At the recent AGM we heard reports from the Treasurer, Chair and Show Secretary, distributed £4500 in fete profits to the village organisations and voted in next year's committee.

After 3 years of chairing the Abbots Ann Fete committee Mike Doherty has stepped down but has agreed to carry on and support as deputy chair. We are now in need of a new chairperson. We would love to find someone who has a bit of spare time (2 hours per month), enjoys organising and wants to give something back to the village while having some fun at the same time! Newcomers welcome. Please contact one of the committee if you are that person or would like to know more about the role.

Chair - vacant

Deputy chairperson - Mike Doherty

Show secretary - Anne Emerson

Treasurer - Chris Wallis

Secretary - Davina Doherty

The date of the next Fete meeting is 22 February 2017

Next year's fete will be on Saturday 2<sup>nd</sup> September 2017

*Davina Doherty*

### **100 CLUB WINNERS 2016**



**1st prize £30, 2nd prize £20, 3rd prize £10**

#### **OCTOBER 2016 DRAW WINNERS**

**First Prize : Major Stuart Whitcomb**

**Second Prize : Mrs P Reed**

**Third Prize : Jenny Read**

*Lisa Hillier*

## **VIEW FROM THE REAR STALLS**

Watching re-runs of "Yes, Minister" on television is strangely reassuring.

No matter what changes of government occur, and how green the new members may be, there remains a continuity of knowledge within the on-going Civil Service. Were Sir Humphrey to retire at the same time as Jim Hacker and the stoical Bernard (the character whose alter ego worked with Basil Brush, not anyone near here!), a totally fresh administration could find itself unknowingly and unnecessarily blasting a new road alongside an already well-trodden path. Heaven forbid...

The Parish Council has met twice since the beginning of September.

The first occasion was attended by representatives of Abbots Ann Vision, TVBC, Action Hampshire and Wickham Community Land Trust. A community land trust (CLT) is the vehicle recommended by AAV to fulfil the housing need revealed by Action Hampshire's survey, and councillors had wanted more information before they agreed.

CLTs originated in the United States, and there are now 170 in this country. The principle is that land and houses be held in perpetuity by a charitable trust formed by local people for the sole benefit of the community. "Affordable" housing can be built for local allocation, as well as smaller properties for elderly residents who want to "downsize" and maybe release their own house for another, bigger family. CLTs are exempt from the "right to buy", and the properties remain in the trust's ownership. New governments can change policy, of course - housing associations, such as that which enabled Criswick Close, used to be exempt, as well.

A main benefit of CLTs is the preservation of a village's character by ensuring that only those with local connections are considered. Children of long-standing village families could afford to stay in the locality in which they grew up. This protects a village from being drowned by a flood of incomers with money to pay for desirable homes but with no historic connection to, and often no present interest in, the community beyond its convenience as a dormitory base for commuting. Preserving the history of the village as a living force is as important as allowing new life to bring fresh ideas - as someone said at the meeting, "we must keep in mind who we are". Otherwise, we are indistinguishable from anyone else.

Children who are enabled to remain in the village can look after parents, who in turn may help with grandchildren. Families stay together, sustaining a supportive community.

The Action Hampshire survey had suggested a need in Abbots Ann village for fifteen new houses. AAV envisages a mix of dwellings. There would be public consultation at every stage, the first step being a public meeting to gauge support.

The council resolved to accept AAV's proposals in principle. There will be

much discussion about the various options and permutations in the coming months, and potential sites will have to be considered.

The October meeting reported on RoSPA's annual inspection of the children's play areas, which raised only minor issues. Weekly checks used to be part of the clerk's duties, delegated in his absence to a designated councillor. The last permanent clerk's check list was highly detailed and consequently invaluable in assuring the safety of the play areas but the new council are apparently preparing a new format. RoSPA indicated the logs stacked in the War Memorial Hall grounds should be removed. No one seemed to know what they were. They are, in fact, the remains of the oak branches that used to overhang the Hall.

A subject which will require a few ice-packs on heads is workplace pensions. Councillors have received information about them, but asked the clerk to ascertain whether they need to set up a pension scheme or not.

They do.

A pension is created by investing money, with tax relief and added incentives, to provide a capital sum that will generate a guaranteed income for life. The pension payable depends on various calculations, including the anticipated duration of payment (i.e. how long you are going to live). In the good old days, capital could produce between five and ten per cent income...

In the even better, even older, days, there were final salary company pensions. A good scheme would pay an annual figure of one sixtieth of your final salary for every year of employment. If you worked for forty years, you would receive a yearly pension of forty-sixtieths, or two-thirds, of your final salary. Companies made provision from profits to cover their future responsibilities to their pensioners.

Political intervention forced most final salary schemes to close to new members. The only alternative is a money-purchase scheme, where your eventual income depends on good investment of your contributions by the fund managers. If you or your employer has chosen a poor manager, or the economy collapses just before you retire, then, like the pensioners of several infamous companies in the past, you could lose the security anticipated for your twilight years.

The Parish Council, albeit with only one employee, the Clerk, is now required to choose and set up a pension scheme. Whilst their financial contributions to it will be relatively small, it is the potential for inadvertent non-compliance, with the concomitant punitive fines, that is of more concern to any employer. Some schemes also need to cover the transferred rights from previous employments, which can be onerous. Councils need to take independent financial advice and be guided by their professional body.

Councillors are preparing a specification for village path maintenance. The successful applicant for the job will not be an employee, and so not eligible to